

WIN-PAK 4.6 Release (Build 1060.6) Release Notes

Table of Contents

1	Introduction.....	3
1.1	<i>Purpose</i>	3
2	Release Notes.....	3
2.1	<i>Release Details.....</i>	3
2.2	<i>Supported MAXPRO Recorders</i>	6
2.3	<i>Highlights.....</i>	6
2.4	<i>Contents in the DVD.....</i>	6
2.5	<i>Installation Tips.....</i>	6
2.5.1	<i>Upgrade Preparations</i>	7
2.5.2	<i>Database Services Upgrade Options:</i>	7
2.5.3	<i>Upgrade on a New Computer.....</i>	8
2.5.4	<i>Upgrade on the Same Computer.....</i>	8
2.5.5	<i>Upgrade Limitations</i>	8
3	Support Resources – MyWebTech.....	9
4	Support Issues Fixed in WIN-PAK 4.6	9
4.1	<i>TDE for SQL Server Enterprise</i>	9
5	Open issues and Limitations in WIN-PAK 4.6 Build 1060.6	10
5.1	<i>Known Limitations & Workarounds:</i>	10
5.2	<i>Known Issues List.....</i>	12
5.3	<i>Limitations of the NetAXS Firmware Upgrade feature</i>	13
5.4	<i>WIN-PAK Time and Attendance - Known issues and workarounds.....</i>	14
5.5	<i>Non-Documented WIN-PAK VISTA-32FBPT Support.....</i>	14
5.6	<i>Non-Documented WIN-PAK Web features</i>	14
5.7	<i>WEB – Badge printer settings.....</i>	15
6	Deliverables	20
7	Approvals.....	20

1 Introduction

1.1 Purpose

The purpose of this document identifies the contents of the released package including defects fixed, key changes, compatibility issues, known anomalies, workarounds, etc.

The approval of this document corresponds to the release of WIN-PAK 4.6 Build 1060.6 for Sales release.

2 Release Notes

Product Name:	WIN-PAK 4.6
Type of Release (Proto, Interim, Beta, and Final)	Sales Release
Date:	May 03, 2018

2.1 Release Details

Item	Version Number/Type/Make
Installation Types	<ol style="list-style-type: none"> 1. Single Server-Host and Web Installation in single Machine. 2. Dual Server – Host in one Machine, Web, Remote UI, COM in another machine. 3. Custom
Software: WIN-PAK 4.6	Build 1060.6
Prerequisites to be taken care while installing the build in latest OS with SQL 2014	<p>SP1 if windows 7 or windows 2008 R2 .Net framework 3.5 SP1 and 4.0 and 4.5 Windows power shell 2.0</p> <p>For Reference use http://msdn.microsoft.com/en-us/library/ms143506.aspx Windows Process Activation for web.</p> <p>When Upgrading IE Version 8 to Higher Versions. By default, it takes in Compatibility View Mode. Uncheck the Compatibility View Mode and launch the Web Application.</p> <p>The following must be taken care while installing WIN-PAK</p> <ol style="list-style-type: none"> 1. Automatic windows update should be turned off 2. Username and password of machine1 and machine2 should be same in case of dual deployment Installation. 3. When installing WIN-PAK in Windows 8 or Windows 8.1 or Windows Server 2012 or Windows Server 2012 R2 Standard. Dot .Net Framework 3.5 should be enabled manually in roles and features or using OS media disc. <ol style="list-style-type: none"> a. .NET 3.5 Framework with HTTP and Non-HTTP Features to be installed as Pre-requisites for WIN-PAK 4.6 with VMS
Hardware (including the OS (DOS, Windows 95/XP, Unix etc.), Compilers, Assemblers, Linker, Editors etc.)	<ul style="list-style-type: none"> • Windows Server 2016 (64 Bit Only) • Windows 2012 R2 Standard (64 bit only) • Windows 10 Professional (64 bit only) qualified ver 1709 • Windows Server 2008 R2 Server Standard (64 bit only) • Windows 8.1 Professional (64 Bit Only) • Windows 7 Professional SP1 (64 bit only)

	<ul style="list-style-type: none"> • SQL Server 2014 express and SQL Server 2014 Std • SQL Server 2012 Std • Express Edition of SQL Server comes as Default with the Installer and support the other edition of SQL Servers too • Supports 64 Bit Editions of OS and SQL Server <p>Note:</p> <ol style="list-style-type: none"> 1. English, Arabic, Chinese Traditional and Simplified, Czech, Dutch, French, Italian, Polish, Portugese and Spanish OS alone with latest service pack. 2. Older Operating like Windows XP and Windows server 2003 are strictly not supported. 3. English SQL alone with latest service pack will support all languages. 4. Older SQL engines like MSDE, SQL2005, SQL 2008 are strictly not supported.
WIN-PAK Software	<p>Upgrade only supported through B & R from WIN-PAK 4.5 B1050.11 and WIN-PAK 4.4 B685.5.11 without VMS (Any older version running in field has to be upgraded to this build.)</p> <p>For WIN-PAK VMS upgrade is only supported from WIN-PAK 4.5 B1050.11 with VMS R310 build 326 (Direct Upgrade)</p>
Browser	Internet Explorer 9.0 and 10.0, 11, Mozilla Firefox 58.0.2, Google chrome 40.0.2214.91 m , Safari 5.1.7(7534.57.2)
Access Panel, Intrusion Panel, Recorders	<ul style="list-style-type: none"> • NetAXS123 (FW: 5.2.64/6.00.10) • NetAXS4 (FW: 3.6.25) • PRO 2200 (P2E_2091.crc) • PW 6000 ((2.6.2 (359)) • PRO3200 (2.7.8(480)) • N1000 IV X (8.07) • NS2+ (V1.05.05) • PRO3000 (R1.05.14) • FIN4000K-20K (V1.92_130222) • FIN4000-10K (V1.51_130318) • FIN4000K-10K (V1.31_130318) • HBAC-WIN2P (3.01.04) • Vista 128 BPT (Rev 10, Rev 12) • Galaxy GD96 (V6.50) • Galaxy GD264 (V6.8) • Galaxy GD520 (V6.75) • Galaxy Flex FX20 (V3.18) • Galaxy Flex FX50 (V3.18) • Galaxy Flex FX100 (V3.18) • Galaxy Flex FX20+ (V3.35) • Galaxy Flex FX100+ (V3.35) • MaxPro NVR 4.0 (Build 87 Rev H) • Embedded NVR (HEN16122) • 4K Series ENVR(HEN322164) • HRDP H.264 (V1.0.0.23) • HRDP MPEG4 (3.0.0.86_2.5.7.H53 , 3.0.1.9) • FUSION IV (4.5.1513, 4.5.5300) • Rapid Eye (V10.0.30)

Panel Communication Types	<ul style="list-style-type: none"> • NetAXS-123 and NetAXS-4 : <ol style="list-style-type: none"> 1) TCP/IP with/without Encryption 2) Reverse IP with/without Encryption • PRO2200/PW5000/PW6000/PRO3200 <ol style="list-style-type: none"> 1) TCP/IP with/without Encryption 2) Reverse IP with/without Encryption • N1000 IV X f/w 8.07 <ol style="list-style-type: none"> 1) TCP/IP with/without Encryption 2) Reverse IP with/without Encryption Using Lantronix and PCI3 • NS2+ TCP/IP using Lantronix • PRO3000 TCP/IP Connection • HBAC-WIN2P <ol style="list-style-type: none"> 1) TCP/IP with/without Encryption 2) Reverse IP with/without Encryption • FIN4000 (version 1) TCP/IP Connection <p>Legacy Modem Communication is supported for NS2, N1000, PRO2200, PW6000</p>
Card Format	<ul style="list-style-type: none"> • Corporate 1000 [35 bit] • 34 bit proximity card • 26 bit
Supported Third Party Devices	Topaz signature pad, Logitech camera, badge printer, videology camera
Reader Types	<ul style="list-style-type: none"> • OmniProx OP 10 • OmniProx OP 30 • OmniProx OP 40 • HID Proximity Reader • HID Card+PIN reader
NetAXS Firmware/OS Version	<ul style="list-style-type: none"> • NetAXS123– Firmware version : NX123_apps05.02.64.bin/NX123_apps06.00.10.bin Supported OS version: NX123_OS107.bin • NetAXS4 - Firmware version: NX4_apps03.06.25.bin Supported OS version: NX4_OS375.bin
VMware Environment	VMware ESXi 6.0

2.2 Supported MAXPRO Recorders

WIN-PAK (WP)	
Release Versions	WP 4.6 B 1060.6.1
NVR/ Hybrid V4.9 B204	Not supported
NVR/ Hybrid V4.7 B188	Supported
NVR/ Hybrid V4.5 B162	Supported
NVR/ Hybrid V4.1 123 Rev B	Supported
NVR/ Hybrid V4.0 B87 RevE	Supported
NVR/Hybrid V3.5.1 SP1 B81	Not supported
NVR/ Hybrid V3.5 B74 Rev F	Not supported
NVR/ Hybrid V3.1.1 SP1 B70 Rev C	Not supported
NVR/ Hybrid V3.1 B65 Rev B/ Rev C	Not supported
Hybrid V3.0 B45 Rev B	Not supported
NVR V2.5.1 SP1 B35 Rev B	Not supported
NVR V2.5 B29 Rev B	Not supported
NVR V2.0 B22	Not supported
NVR V1.0 B11	Not supported

2.3 Highlights

- HID Mobile Reader Integration in WIN-PAK Host and Web
- Galaxy Flex Integration
- VMS R470 Integration
- Embedded NVR Integration (adding 4k Series)
- Tracking & Mustering Report feature in Web
- Card Frequency Report feature in Web
- Additional Note fields filter in 3 Reports
- Card Report, "Limited Number of Uses" column added
- Merged Field Defect fixes
- Multi-Language Support
- Enabling TDE for SQL Server Enterprise edition (see procedure below)

2.4 Contents in the DVD

This DVD contains more than just the WIN-PAK software. It contains documentation on WIN-PAK as well as some useful utilities. When you insert the DVD, a menu appears to automatically guide you to the software documentation, registration link and software installation. If this does not automatically launch, you can navigate to your DVD using Windows Explorer or Run, and click the Launch.exe file. Post installation utilities are found by navigating to the DVD's root, Utilities folder. This folder contains empty WIN-PAK databases.

Navigating to the PDF folder, you will find language subfolders. You may find it useful to copy one or more of these manuals to your local hard drive for easy reference. The Userguide.pdf is the full WIN-PAK manual and the Quick.pdf contains the basic setup and day-to-day information.

2.5 Installation Tips

1. Make sure you have the administrator privileges to install the software.

2. If this is an upgrade, make sure to properly back up your database and also the contents of the Database folder (C:\Program Files (x86)\WINPAKPRO\Database). Review the WIN-PAK release notes on the DVD before starting the installation.
3. The WIN-PAK website address needs to be added In Trusted sites of browsers to work with WIN-PAK web.
4. Popup Blocker option should be disabled in the browser to work with WIN-PAK web. Report previews use the popup function.
5. If you are using the NetAXS access control panels, confirm that the version of firmware meets the minimum requirements for this WIN-PAK release. The minimum version for NetAXS-4 is 3.4.3 and the minimum version for NetAXS-123 is 3.4.27. WIN-PAK will not communicate “natively” to a NetAXS panel that does not meet the minimum firmware requirements.
6. To ensure optimum performance when installing a new NetAXS panel on WIN-PAK we recommend that you “flatten” (hard, DIP switch reset) the NetAXS after the firmware upgrade before you initialize the panel from WIN-PAK for the first time.
7. WIN-PAK 4.6 supports the following SQL installations:
 - a. New installations will install SQL 2014 Express as default for the supported languages.
 - b. If upgrading to a new computer and the previous version is WIN-PAK 4.0 or newer, then the bak files can be restored on the new WIN-PAK 4.6 computer. Remember to also copy over the contents of the Database folder (C:\Program Files (x86)\WINPAKPRO\Database).
8. Dependent on the recorder and cameras used, best video viewing will require you to configure the “VMS” for GPU rendering. GPU rendering is only available when using a Supported CPU such as Haswell i7 4770k with a built-in GPU. R310 Build 366 added Intel’s Skylake 6700K CPU support, a dedicated graphics card will not work for rendering.
9. After the WIN-PAK installation is complete, SE, PE and CS installations configured for video integration should follow the steps below to avoid the error: **“Failed to Retrieve Record settings – Loading values from WIN-PAK Database”** when retrieving “Camera Configuration” of Mapxro NVR. These steps will also address Video salvo default aspect ratio settings issues:
 - a) **Close WIN-PAK UI & stop all WPServices and Trinity services. Once they are all stopped, close the WIN-PAK Service Manager**
 - b) **Browse DVD contents & navigate to path Software->VMSPatches**
 - c) **Copy “VMSPatches” folder itself and paste it to any of the local drive of the system**
 - d) **Now navigate to WINPAKPRO\Honeywell\Trinityframework & locate “bin” folder. Remove “Read-only” permission for bin folder**
 - e) **Invoke “VMS_TOM_Patch” found under the “VMSPatches” folder copied to local drive with “Run as Administrator” option**

2.5.1 Upgrade Preparations

If this is an upgrade version of WIN-PAK, there are two different approaches.

1. Installing on a separate/new computer.
2. Installing on the same computer.

In both cases, you must:

- a) Have administrator privileges to install the software.
- b) Properly back up your database and images, and review the WIN-PAK release notes on the DVD before starting the installation.

2.5.2 Database Services Upgrade Options:

Directly supported upgrades are from WIN-PAK GX/XE/SE/PE (Single accounts) build 685.5.11 and WIN-PAK CS 4.3.1 Build 1017.48.3 and higher. Older WIN-PAK builds should be sent to Honeywell tech support for DB conversion. To start this process, please call technical support at 800-323-4576 option 2 or click on the following link and follow steps 1, 2, and 3 to complete the on-line database services technical support web request form.

<https://www.honeywellsystems.com/ss/techsupp/index.html>

Database Services	
WIN-PAK Upgrade	Part Number

WIN-PAK database upgrade 7 – 10 day lead time *	CPSSRVDB
WIN-PAK database upgrade 2 day lead time *	CPSSRVDB2DAY

* Based on Honeywell business days

2.5.3 Upgrade on a New Computer

Upgrading WIN-PAK to a new computer is as simple as performing a new install of WIN-PAK using the new WIN-PAK 4.6 CD Key provided with your installation media; and then using WIN-PAK's Backup and Restore feature, restore your backup on the new WIN-PAK computer making sure to not only restore the database but also copy any floor plans or badging information from the "C:\Program Files (x86)\WINPAKPRO\Database" folder. To complete the license transfer, you will need to go online and register your new installation to receive the License Key.

2.5.4 Upgrade on the Same Computer

There are two ways to install the WIN-PAK upgrade on the same computer:

1. Direct installation on top of the existing WIN-PAK, which is adequate for most access control only installations. You will need to use the new WIN-PAK 4.6 CDKey to take advantage of the new 4.6 features.
2. Uninstall the old WIN-PAK and if needed the old database engine and perform a full installation of the new WIN-PAK.

This release supports SQL 2012 and SQL 2014. If your database engine is not supported, you must uninstall the old database engine before upgrading. You must know the SQL Server user name and password to complete the upgrade for supported database engines.

Direct installation and SQL upgrade may require the installation to run multiple times. A maximum of 3 cycles may be required. During these recycles care should be used to ensure the same data is entered including the new CDKey during each recycle.

The installation using video integration must follow the second approach. You must uninstall WIN-PAK first, and then re-install using your new CD Key.

NOTE: When upgrading, make sure to use the "WIN-PAK Service Manager" to manually stop all WIN-PAK services and once they are all stopped, close the "WIN-PAK Service Manager" tool before beginning the upgrade.

2.5.5 Upgrade Limitations

1. Upgrading from WIN-PAK PE 4.4 with more than one account is not supported/recommend.
 - a. If you chose to upgrade, the Card Holder Note Field data will be merged independent of the Note Field name. The data will be merged based on the order the Note Field was created using the Note Field names from Account 1 (changing the order of the Note Field after the initial creation will not provide any "correction"). This will likely result in data that appears out of order or inconsistent if the subsequent accounts created the Card Holder Note Fields in a different order.
 - b. Time Zones, Holidays and Access Levels will have similar anomalies.
2. When upgrading from WIN-PAK 4.4 and WIN-PAK CS 4.3.1 newly added features will require edits to the operator permissions before the operator will be able to use them. Key areas to review for WIN-PAK 4.4 to 4.6 include:
 - a. Reports
 - b. Access to Web (Operator->Operator Information) check box
3. WIN-PAK utilizes Dynamic Port Allocation (6000-6500). Do not use any of these ports for RIP configurations. Upgrades that have RIP panels using these ports will see panel connection issues and web browser issues. Configure panels in this range to use different port(s).

3 Support Resources – MyWebTech

MyWebTech | Customer Portal <https://mywebtech.honeywell.com/>

- How-To Video's
- Knowledgebase
- View Cases
- Submit Technical Questions
- Review Database Service Status

4 Support Issues Fixed in WIN-PAK 4.6

S.No.	JIRA ID	Description
1	WPSUPPORT-963	Unable to export generated attendance report for bulk data (more than 1 day transaction) in WIN-PAK 4.4 attendance module.
2	WPSUPPORT-990	WIN-PAK 4.4 upgrade to 4.5 the card expiration dates are stripped out and expired cards are made active
3	WPSUPPORT-997	Custom Access Levels associated to the cards are missing after upgrading WIN-PAK 4.4 to WIN-PAK 4.5

4.1 TDE for SQL Server Enterprise

The below references to "WPMasterKey12345" is only used as an example. You can insert an appropriate SQL supported strong password of your choice.

Creating the master key for the SQL Server:

```
USE Master;
GO
CREATE MASTER KEY ENCRYPTION
BY PASSWORD='WPMasterKey12345';
GO
```

Creation of Certificate for SQL Server:

```
CREATE CERTIFICATE WP_TDE_Cert
WITH
SUBJECT='WINPAK_Database_Encryption';
GO
```

Applying the certificate to the WIN-PAK PRO database with Encryption AES 256:

```
USE [WIN-PAK PRO]
GO
CREATE DATABASE ENCRYPTION KEY
WITH ALGORITHM = AES_256
ENCRYPTION BY SERVER CERTIFICATE WP_TDE_Cert;
GO
```

Enabling the TDE for WIN-PAK PRO Database:

```
ALTER DATABASE [WIN-PAK PRO]
SET ENCRYPTION ON;
GO
```

After applying the encryption to the database, take the backup using the following query:

```
USE Master;
BACKUP CERTIFICATE WP_TDE_Cert
TO FILE = 'C:\WP_TDE_Cert'
WITH PRIVATE KEY (file='C:\WP_TDE_CertKey.pvk',
ENCRYPTION BY PASSWORD='WPMasterKey12345')
```

Below query is the Confirm whether TDE is enabled or not

```
SELECT
    db.name,
    db.is_encrypted,
    dm.encryption_state,
    dm.percent_complete,
    dm.key_algorithm,
    dm.key_length
FROM
    sys.databases db
LEFT OUTER JOIN sys.dm_database_encryption_keys dm
    ON db.database_id = dm.database_id;
GO
```

5 Open issues and Limitations in WIN-PAK 4.6 Build 1060.6

5.1 Known Limitations & Workarounds:

1. **“Failed to Retrieve Record settings –Loading values from WIN-PAK Database”** error will be seen, when retrieving “Camera Configuration” of Mapxro NVR and Video salvo default aspect ratio settings issue; follow the below workaround:
 - a) **Close WIN-PAK UI & stop all WPServices and Trinity services. Once they are all stopped, close the WIN-PAK Service Manager**
 - b) **Browse DVD contents & navigate to path Software->VMSPatches**
 - c) **Copy “VMSPatches” folder itself and paste it to any of the local drive of the system**
 - d) **Now navigate to WINPAKPRO\Honeywell\Trinityframework & locate “bin” folder. Remove “Read-only” permission for bin folder**
 - e) **Invoke “VMS_TOM_Patch” found under the “VMSPatches” folder copied to local drive with “Run as Administrator” option**
2. During the VMS installation, if the following installation errors is seen: **“Failed to Install Maxpro VMS Setup”, “MAXPRO VMS R470 BUILD 476 Patch Installation – The system cannot find the file specified”** and **“MAXPRO VMS R470 BUILD 476 Patch – Installation failed. Installation will rollback now.”** Then, the workaround is to:
 - a) **Open the WIN-PAK Service Manager and stop all WPServices and Trinity services. Once they are all stopped, close the WIN-PAK Service Manager**
 - b) **Browse DVD contents & navigate to path Software->VMSPatches**
 - c) **Copy “VMSPatches” folder itself and paste it to any of the local drive of the system**
 - d) **Now navigate to WINPAKPRO\Honeywell\Trinityframework & locate “bin” folder. Remove “Read-only” permission for bin folder**
 - e) **Now navigate to “VMSPatches” folder copied to local drive & invoke “Setup.exe” placed under folder MAXPRO_VMS_R470_Build476 with “Run as Administrator” option**
 - f) **When complete, stop all WPServices and Trinity services**
 - g) **Now navigate to WINPAKPRO\Honeywell\Trinityframework & locate “bin” folder. Remove “Read-only” permission for bin folder.**
 - h) **Invoke “VMS_TOM_Patch” found under the “VMSPatches” folder copied to local drive with “Run as Administrator” option**
3. WPACT-789: User not able to login WIN-PAK Host UI showing failed to connect to Database If SQL 2014 Standard is already installed & during WP installation ‘Windows Authentication’ (SQL) has selected - **WIN-PAK does not work in Windows authentication mode in pre-installed SQL environment as known issue, Configure WIN-PAK to connect to the database with SQL Authentication instead of Windows Authentication WIN-PAK System Manager.**

4. WPACT-760: HID Credential not get created successfully from WEB GUI and Mobile credential details are not added in cards Tab - ***HID mobile credentials not get created by web operators in nodes which are connected to internet via proxy server. WIN-PAK web server has access to internet without proxy configuration would resolve this issue & HID credential get created from WIN-PAK web***
5. Make sure that the machine is updated with all latest Windows and McAfee Updates and when WINPAK installation starts, no other installer should be running in background.
6. WPACT-766: Creation of COM+ Components failed error observed during fresh installation of WP4.6 with SQL 2014 Express - ***This issue will occur only when any MSI/installer running in background. Make sure that the machine is updated with all Windows/AV updates and no updates were running in background during WIN-PAK Installation.***
7. VMS (R470) installed with latest WIN-PAK 4.6 does not connect until user configure Video Management Server and apply the password using Change Password feature available in Server Configuration. (Use Blank for old Password)
8. WPACT-743: Galaxy Flex 50+ Panels added in WIN-PAK, but it got discovered as FX100 Panel. - ***As the issue is with Galaxy flex firmware & will not be fixed in near future.***
9. WPACT-912: Flex 20 and 20+ Panels showing additional Outputs which are not available in the panel These outputs are not controllable from WIN-PAK Control Map.
10. WPACT-890: Card history report does not display event Status when exported to an excel file from the WEB UI. ***Preview works and export from workstation works.***
11. WPACT-888: Always ON Time zone doesn't exist on NetAXS Panel on Non-English OS. ***Resolve by creating and adding to the panel a time zone defined with all times and days.***
12. WPACT-887: Reports may not be generated in some non-English OS due to lack of full Permission for "Everyone" user group for TEMP folders in installed location. ***Workaround to resolve is to give everyone permission for the below WP log folders.***
 - a. ***WINPAKPRO\Reports***
 - b. ***WINPAKPRO\tempfiles***
 - c. ***WINPAKPRO\reportsql.sql***
13. WPACT-885: Impossible to add/modify Galaxy Users if the WIN-PAK Operator has no Administrator rights
14. Windows Firewall Blocked Message Pops up during WIN-PAK 4.6 installation, User need to allow Access when its prompted
15. WIN-PAK 4.5 release limitations and known workarounds would be applicable for this WIN-PAK 4.6 MVO1 Build 1060.3 as well.
16. End Customer/Admin Operator need to watch out for the Warning Message about "Criticality of DB Migration during WP 4.6 if Existing WIN-PAK 4.4 PE has Multiple Accounts"
17. Print Badge and Reports (Account Summary, Door Schedule, Holiday and Operator Summary) has no permissions even existing operator who had Full View or Operate permissions after upgraded to WIN-PAK 4.6
18. License key update in WIN-PAK will show false error popup like Failed to update the license, but it will update correctly in background.
19. During WIN-PAK 4.6 installation, SQL 2014 may show up a message popup like "SQL Express 2014 installation failed: Unable to locate Summary.txt file" and setup get aborted. Restart the machine and Re-initiate the WP 4.6 Build installation.

20. Unable to change the priority/configure various actions like send Email, Trigger Command File, etc., for the existing Action Group templates available in DB once upgraded to WIN-PAK 4.6 (WPACT-252).
21. Cardholder addition/Modify from WP API with operator login does not work properly. Requires Admin privileges.
22. Report print preview showing empty pages while user navigate by Next Page, Previous Page and Two Page options randomly.
23. Warning Message show up as Question Mark instead of Alert Symbol during Upgrade or Backup Restore from WIN-PAK 4.4 PE with Multiple Accounts
24. Unable to login with existing operators which are deleted after Upgraded to WP 4.5 – **Using Backup and Restore utility user can resolve this issue.**
25. Export to Excel option is not available when Access level report generated from WEB UI
26. Windows user account not get deleted from WP DB when user switch back to default WIN-PAK login method from "Login using Current Windows user at Startup"
27. "Login using Current Windows user at start up" configured and logged in windows user not able to access WIN-PAK UI Menus
28. Known limitations of NetAXS FW Upgrade related still applicable for this release as well.
29. NetAXS123 Panel Firmware version is not updated properly in WIN-PAK Device Map – commonly observed when previous firmware is older than 5.0.16.
30. Getting "Client Services Not Running" message when WIN-PAK UI closed & reopen on random test beds. If this message pops up need to restart all the WP services.
31. Time and Attendance application is not supported in IE Browser, only supports modern browser like Chrome and Firefox.
32. Time and Attendance application does not support more than one Account.

5.2 Known Issues List

Key	Summary
WPACT-813	Report print preview does not show up all the records available in the report where report exported in to Html/Xls
WPACT-809	Dotted lines in unassigned cards of card holder page of WEB GUI
WPACT-807	Welcome Image not displayed in Web GUI
WPACT-790	Web GUI allowing card functions in Demo mode
WPACT-788	24 User Codes only discovered in Flex 20 Panel instead of 25 as screen shot attached
WPACT-786	Time and Attendance application does not open in WIN-PAK upgraded machines
WPACT-783	Auto download feature is not working for FIN4000 Panel in WIN-PAK 4.6 Build

WPACT-774	WEB GUI- Mask allowing special characters for Alphabet inputs in additional cardholder information
WPACT-757	Card Number greater than 65536 can be added from WEB GUI in Card Length Configured as 5
WPACT-755	Import Utility crashed when importing bulk number of card holders data into WIN-PAK
WPACT-750	Cosmetic issue found during WIN-PAK installation in Non-English OS
WPACT-742	Galaxy Flex Panel discovery is successful even if No/Wrong System ID details provided in Ethernet Module
WPACT-630	NetAXS Panel Tamper/Power alarm Status ID in API showing incorrect when alarm reported
WPACT-875	When using the Web on Arabic Language OS date functions are not working as expected
	Video integration won't work with Chinese OS

5.3 Limitations of the NetAXS Firmware Upgrade feature

1. Download Firmware can be performed only by admin operator from the Control Map, right click on the NetAXS Gateway and select 'Download Firmware'.
2. The NetAXS panel or "loop" of panels must be online in WIN-PAK before upgrading firmware.
3. The NetAXS panels will suspend all access control functions and communications during the firmware upgrade process thus panel downtime will occur during the upgrade process.
4. Network speed and any network disturbances will impact the upgrade process as the COM server transfers the DTA mini files that performs the initial upgrade to the panels and then DTA utility transfers Firmware files to all the panels in background. Both processes are highly dependent on Network/COM server's availability.
5. The firmware upgrade function only supports upgrades. If a panel has firmware of a higher version, it will not be overwritten.
6. The default WIN-PAK installation will use NetAXS-4 Firmware Version 3.06.25 and NetAXS-123 Firmware Version 6.00.10 files in the "WINPAKPRO\Firmware\releases" folder. If your panels are already at this level, no firmware update is required. At any time, only one firmware version for each panel type can be placed inside the WINPAKPRO\Firmware\releases folder along with its compatible OS file. When newer firmware becomes available, remove the old firmware files and paste the new files into this folder.
7. Firmware version will be displayed as 'Unknown' in Device map configuration page while configuring a new panel or when the panel status is uncertain
8. When upgrading older firmware such as 3.4 that was not configured for encryption, encryption will automatically be enabled by the DTA utility. The same encryption key will be copied automatically to panel's device map configuration and corresponding mode say if it was in Direct TCP IP / RIP **without** Encryption it will be modified to Direct TCP IP / RIP **with** Encryption after upgrade.
9. It is advised to perform upgrade for one panel with multiple downstream panels (1 loop set) at a time considering the network speed.

Firmware Upgrade Anomalies

1. Typically, a NetAXS-4 Gateway (GW) panel will take approximate 20-30 min to download and install new firmware (NetAXS-123 Gateway 5- 10 min less). If the panel doesn't come back online after 30 min, from the Control Panel send a Manual unbuffer command to the panel. It should respond by coming back online. IO status updates may be a bit slow for a few minutes and then return to normal. If the Gateway has additional panels connected to it, it may take approximately 5-30 min longer depending on how many downstream panels are connected. If these times are exceeded (over 1 hour total) it may become necessary to power cycle the GW panel.

2. Interruption of the panel power during a firmware upgrade will cause the upgrade process to fail. If this should occur the panel power needs to be recycled by following the troubleshooting steps.
3. If a WIN-PAK COM server/DTA utility shuts down due to any external failures will affect the upgrade process and this failure event will not be notified in the WIN-PAK UI

5.4 WIN-PAK Time and Attendance - Known issues and workarounds

1. Chrome Browser is recommended as some older IE browsers will have compatibility issues.
2. Employee name came as ALL in Leave, On Duty and Attendance Correction Report on Export
3. On Editing the Supervisor in Update Supervisor - Username not coming in mail
4. In Report schedule, selected employee shows duplicate record after report executed
5. In Shift Allocation - no validation for selecting shift
6. Forgot/ Change Password Alert message Issue, not move to the homepage
7. Installation issues after uninstallation
8. LDAP login is not working in WIN server 2012
9. New Employee addition failed when joining date is on December month
10. "ALL" option in configuration is not working in edit mode
11. T&A Home page Login button not firing when the ENTER button is clicked on
12. "Report Generated by" should be removed from scheduled report
13. Carry forwarded Earn leave should be accumulated with previous earn leave balance
14. Location change for Employee will not update leave balance as per the new location leave balance
15. Email address Special character validating but not restricting the user to enter in SMTP settings
16. Leave cannot be applied for 2.5 day if there is a 3rd day on duty is already applied

5.5 Non-Documented WIN-PAK VISTA-32FBPT Support

Configure WIN-PAK using the VISTA-128FBT (128FBP as found in the WIN-PAK pick list) process noting the following differences/limitations below:

Feature	VISTA-128FBPT	VISTA-32FBPT	Comment
Number of Partitions	8	2	Use the first 2 only
Number of Zones	128	32	Use the first 32 only
Number of User Codes	150	75	Use the first 75 only

The number of relay outputs is the same (96 total), the number of ECP devices (keypads, etc.) are the same (31), the supervision zones for devices, bell outputs, relays, etc. are the same between the panels.

5.6 Non-Documented WIN-PAK Web features

The following provides additional functional information for these non-documented Web features.

1. For secure Web refer to the "WIN-PAK CS Web user's guide.pdf" found PDF->EN folder on the installation media or the following link for creating "Self-Signed Certificate" <http://www.sslshopper.com/article-how-to-create-a-self-signed-certificate-in-iis-7.html>
2. You can change the Web Session timeout in "Web.config" file.
 - a. Go to "C:\Program Files (x86)\WINPAKPRO\Web\CSACNET" in Web Installed machine.
 - b. Open "Web.config" file in notepad. (make sure that the file attribute is changed from read only to allow saving of the changes and then revert back to read only after saving the changes).
 - c. Change the session timeout value – maximum of 119 can be used in place of the default 5 value
`<sessionState mode="InProc" stateConnectionString="tcpip=127.0.0.1:42424" sqlConnectionString="data source=127.0.0.1;user id=sa;password=" cookieless="false" timeout="5"/>`
 - d. Save and close. Do IISRESET.

Note: By default, "Web.config" file will be hidden. Enable it in tools->folder option->view->show hidden files, folder and drivers.

5.7 WEB – Badge printer settings

1. Limitations in Printing Badge from WEB:
 - a) Background image tiling is not supported.
 - b) Background image needs to be stretched to Width and Height and the aspect ratio must be maintained.
 - c) Shapes like Rectangle and Lines may not be visible on the web / printing from web.
 - d) Both sides are expected to be of the same layout - portrait / portrait... or landscape / landscape. A mix (front - portrait / back - landscape or reverse) will not cause the layout to be proper and will usually take the front side's layout for the back. Layering may differ in the host and web.

When using the print function from the web browser, make sure to select a single page - do not accept print all, as this will result in consuming multiple cards when only one is needed.

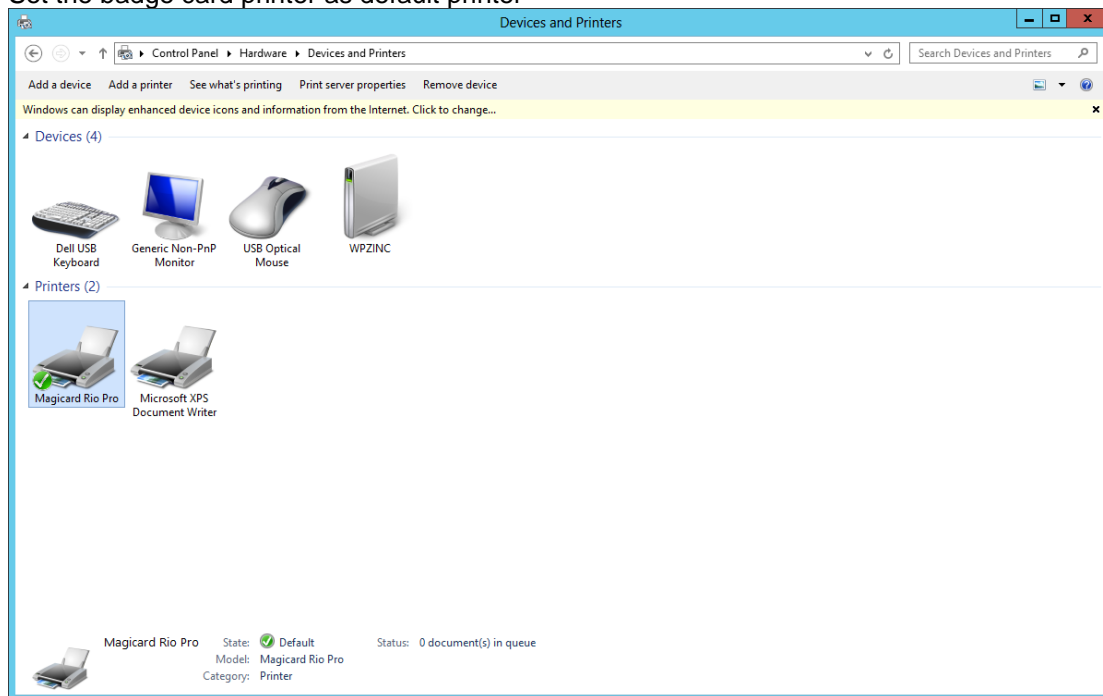
Ensure the print features are set as:

- a) badge layout orientation matches printer settings (Portrait or Landscape - do not select "Application determines orientation")
- b) printing header/footer information is disabled
- c) Left, Right, Top and Bottom margins are set to zero
- d) Print current page

Below are sample of settings used for IE 9, IE 10

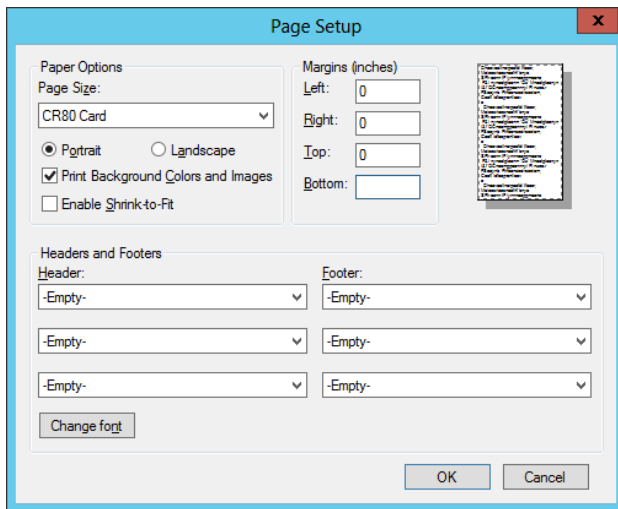
Setting on Printers page

Set the badge card printer as default printer



Page setup on Browser

Paper size and Orientation per the badge dimension, along with setting shown in the image below (IE):



(Chrome)

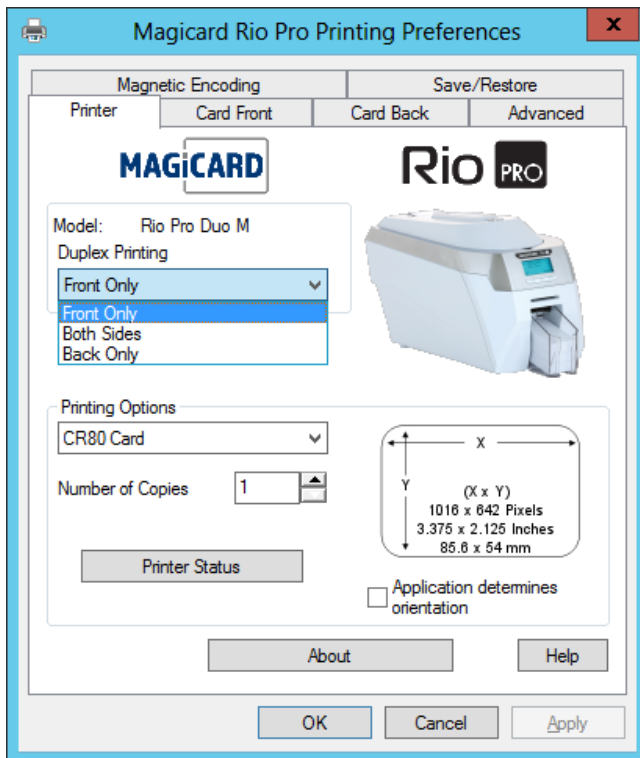
Selection of Duplex printing

Front Page-First page only

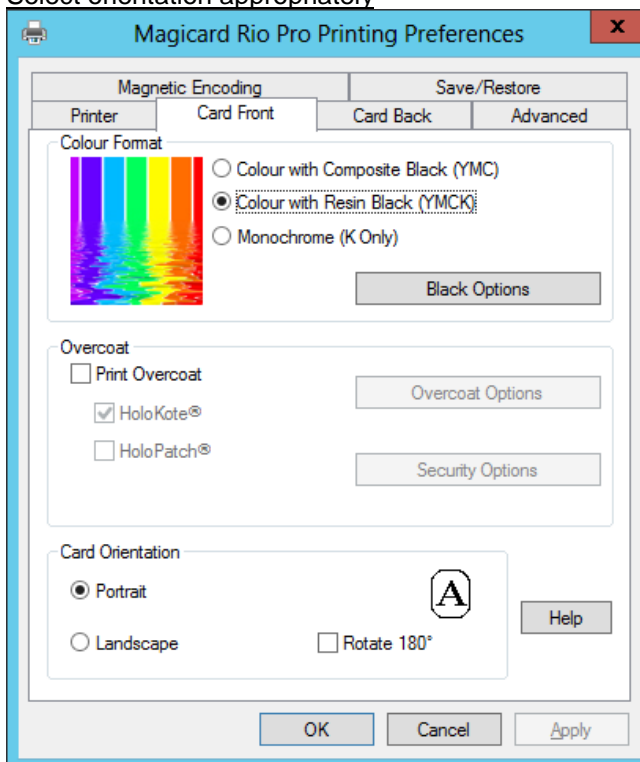
Bothe Page-Front and second page on same card

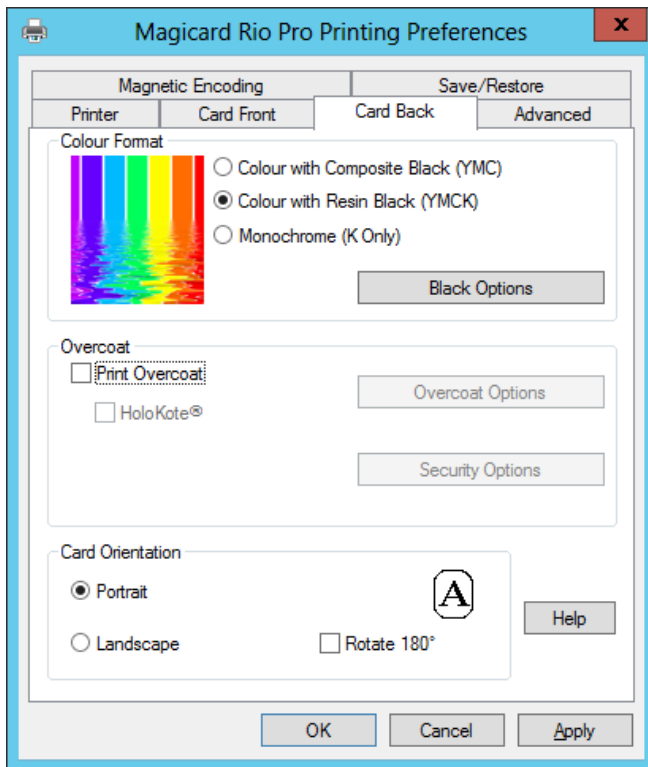
Back Only-Second page only

Uncheck Application determines the orientation

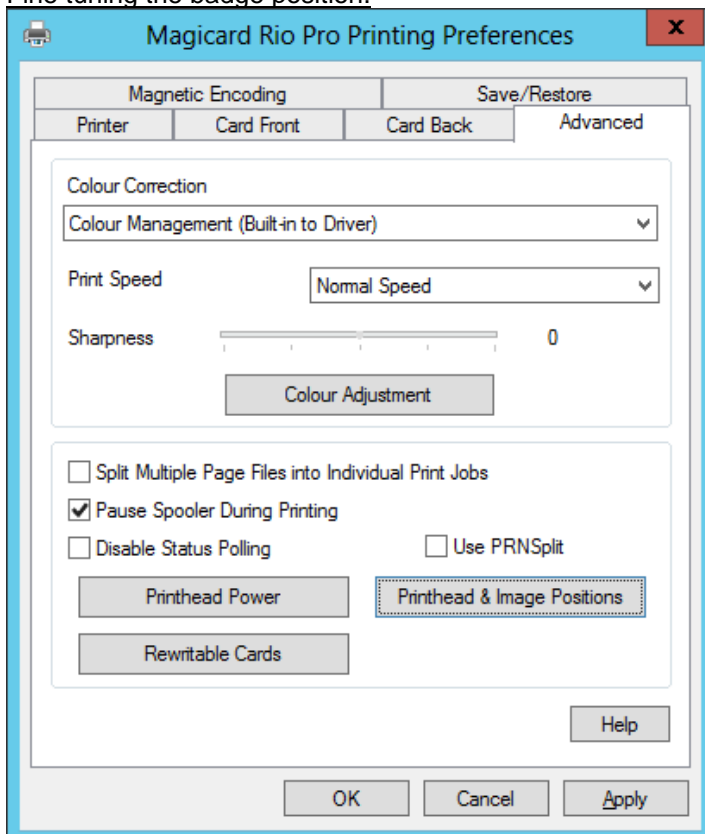


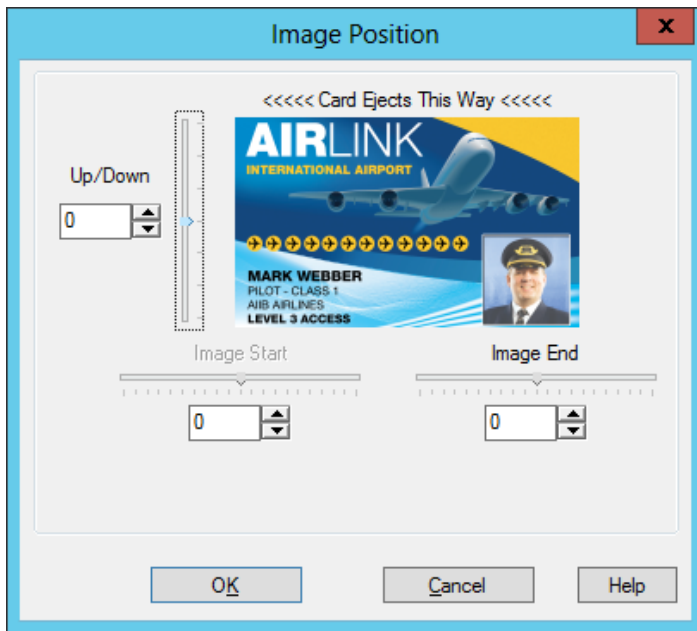
Select orientation appropriately



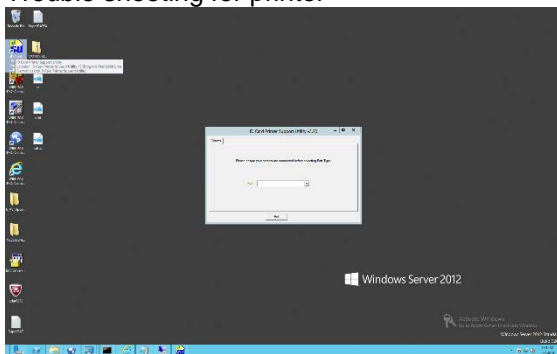


Fine tuning the badge position.

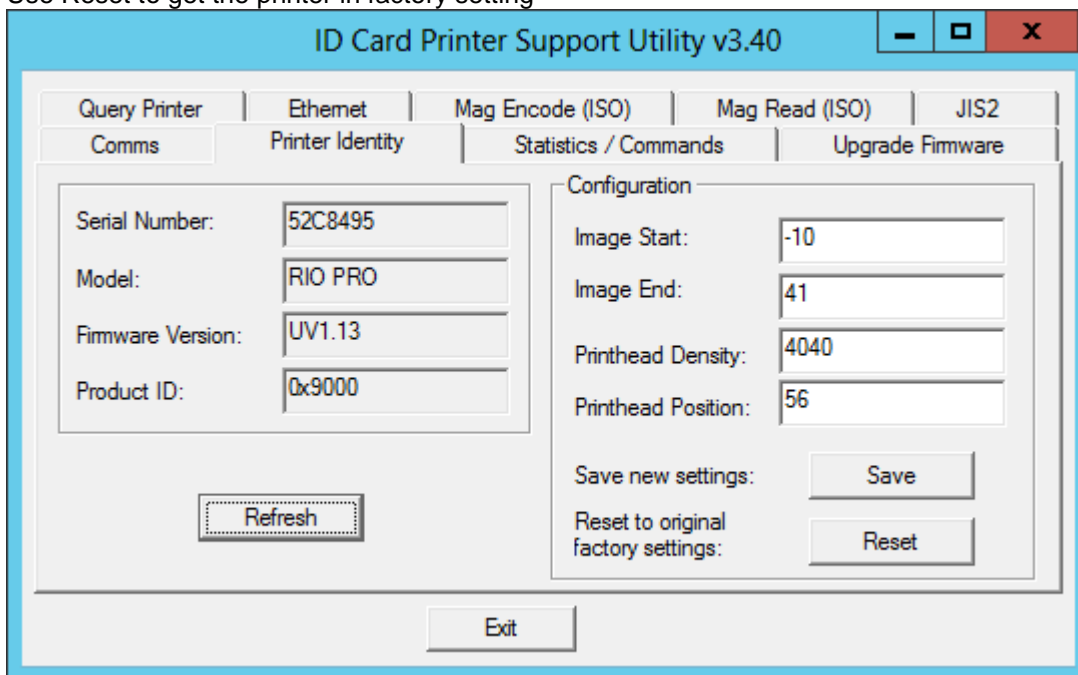




Trouble shooting for printer



Use Reset to get the printer in factory setting



6 Deliverables

WIN-PAK4_6_B1060_6 – Installation Media for WIN-PAK 4.6 Build 1060.6

7 Approvals

The approval of this document corresponds to the release of WIN-PAK 4.6 MVO1 Build 1060.6.

-END-