

## MAXPRO® NVRs - AXIS Camera/Encoders Discovery and Configuration (using ONVIF)- Application Note

---

### Introduction

---

This application note describes the steps to discover and configure the AXIS Camera/Encoders as an ONVIF device in MAXPRO NVRs.

If you have questions concerning this document, please contact Honeywell Technical Support. See the back cover for contact information.

### Step 1: Enable ONVIF Web Service on AXIS Camera/Encoder

---

#### Scenario Description

If you are unable to discover AXIS cameras/encoders using ONVIF compliance standard in MAXPRO® NVR, ensure that ONVIF Web service is enable and setup on the AXIS device.

The above scenario is noticed if you log on to the camera web page (for example to set the IP address on the AXIS device) prior to discovering and configuring the device in NVR through ONVIF, as a result the ONVIF Webservice gets disabled automatically.

Perform the steps in [Option 1: Add a ONVIF user in the camera web page.](#) or [Option 2: Reset to factory default settings](#) to enable ONVIF on the AXIS devices.

---

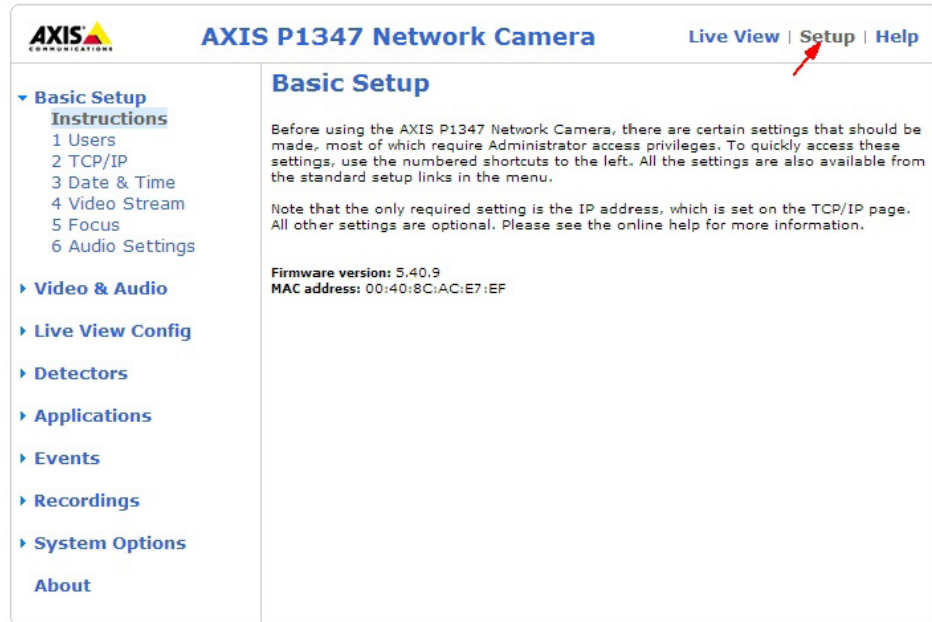
**Note**      AXIS P1347 Network Camera is used as an example to show the steps required, perform similar steps for other AXIS ONVIF devices.

---

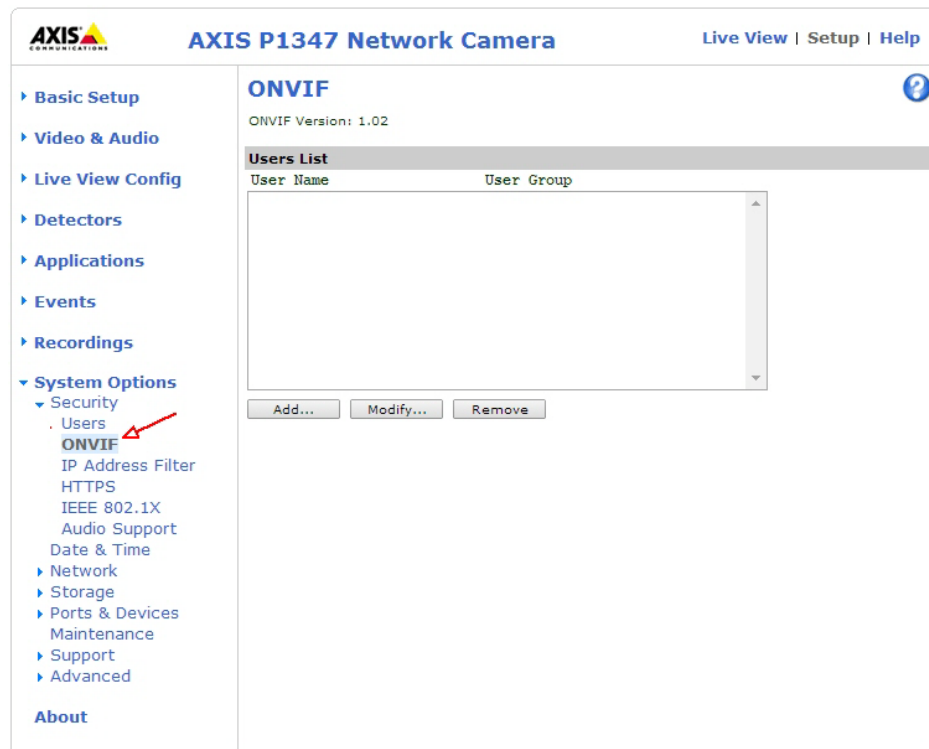
#### Option 1: Add a ONVIF user in the camera web page.

##### To add a ONVIF User

1. Log on to the AXIS camera web page. The AXIS camera home page appears with live video.



2. Click **Setup** and then navigate to **System Options > ONVIF**. The **User List** dialog box appears.



3. Click the **Add** button. The **ONVIF User Setup** dialog box appears.



4. Type the **user name** and **password** in the respective boxes.
5. Confirm the password and then click **OK**. The newly added user is displayed in the **User List** box.

---

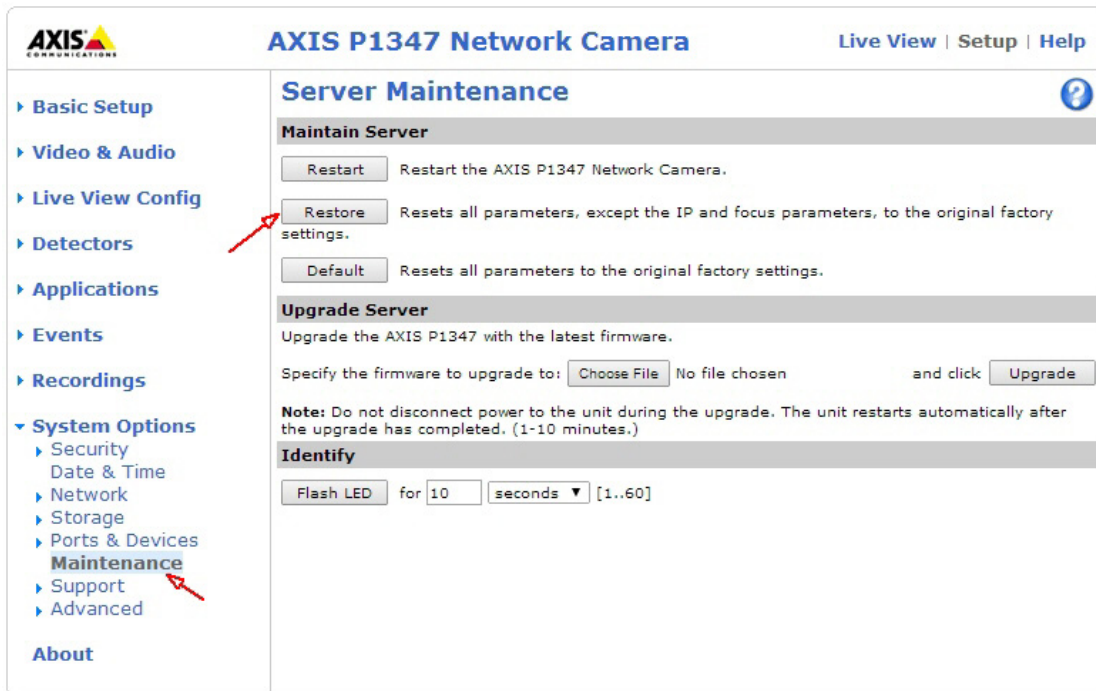
**Note** Ensure that you enter the same **User name** and **Password** in MAXPRO® NVR **Discovery** (Advance Settings) dialog box.

---

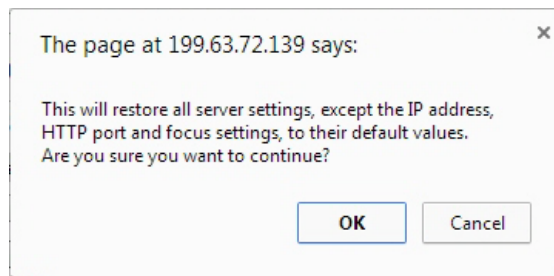
### Option 2: Reset to factory default settings

#### To reset factory default settings

1. Log on to the AXIS camera web page. The AXIS camera home page appears with live video.
2. Click **Setup** and then navigate to **System Options > Maintenance**. The **Server Maintenance** page appears.



3. In the **Maintain Server** area, click **Restore**. A confirmation box appears.



4. Click **OK**.

---


**Note** Factory default settings resets all the parameters, except the IP and focus parameters, to the original factory settings.

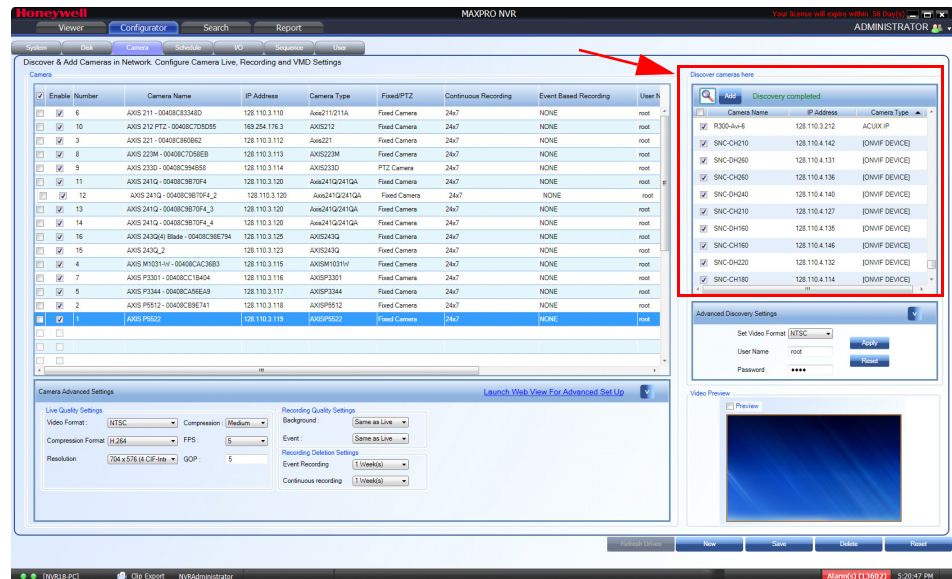
---


5. Add and discover the AXIS camera in MAXPRO NVR using the default user name **root** and password **pass**.

## Step 2: Discover and Configure the AXIS Camera/Encoder in MAXPRO® NVR

### To discover and configure the AXIS Camera/Encoder in MAXPRO NVR

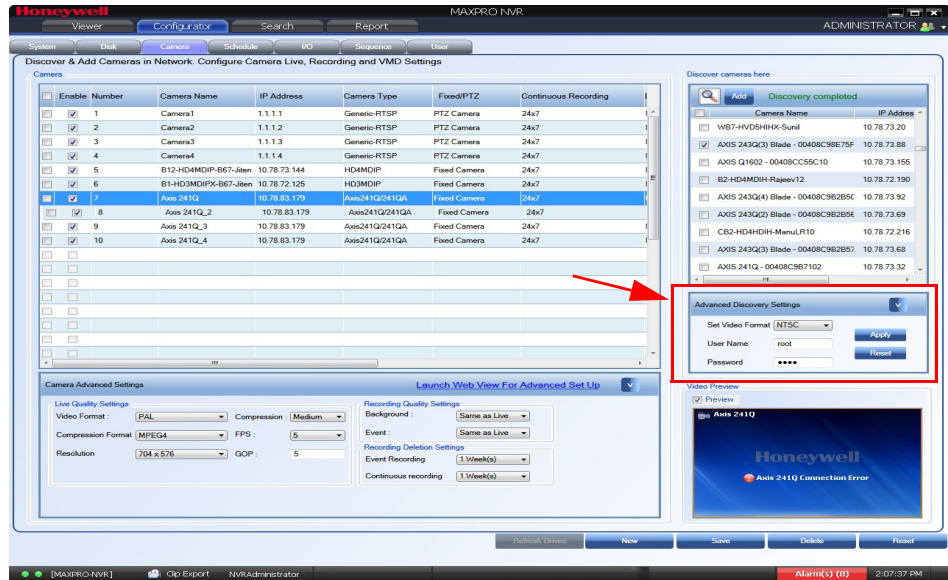
1. In MAXPRO NVR, click the **Configurator** tab. The **System** page displays by default.
2. Click the **Camera** tab to open the **Camera** page.
3. Under **Discover cameras here**
  - Click  to discover the cameras in the network. By default, the check boxes corresponding to all the discovered cameras are selected as shown below.



4. After the discovery, to add the AXIS cameras, first clear the check boxes corresponding to all other cameras other than AXIS cameras.
5. Select a AXIS camera that you want to add, and click  to open the **Advanced Discovery Settings** pane.
6. Type the **User Name** and **Password** of the third party AXIS camera as shown in the following figure.

**Note** The default user name is **root** and password is **pass**.

# MAXPRO®NVRs - AXIS Camera/Encoders Discovery and Configuration (using ONVIF) - Application Note



7. Click **Apply**.
8. In the **Discover cameras here** area, click **Add** to add the camera.

**Honeywell Security Products Americas**

2700 Blankenbaker Pkwy, Suite 150  
Louisville, KY 40299, USA  
[www.honeywellvideo.com](http://www.honeywellvideo.com)  
☎ +1.800.323.4576

**Honeywell Security Europe/South Africa**

Aston Fields Road, Whitehouse Industrial Estate  
Runcorn, WA7 3DL, United Kingdom  
[www.honeywell.com/security/uk](http://www.honeywell.com/security/uk)  
☎ +44.01928.754028

**Honeywell Security Caribbean/Latin America**

9315 NW 112th Ave.  
Miami, FL 33178, USA  
[www.honeywellvideo.com](http://www.honeywellvideo.com)  
☎ +1.305.805.8188

**Honeywell Security Pacific**

Level 3, 2 Richardson Place  
North Ryde, NSW 2113, Australia  
[www.honeywellsecurity.com.au](http://www.honeywellsecurity.com.au)  
☎ +61.2.9353.7000

**Honeywell Security Asia**

35F Tower A, City Center, 100 Zun Yi Road  
Shanghai 200051, China  
[www.asia.security.honeywell.com](http://www.asia.security.honeywell.com)  
☎ +86 21.5257.4568

**Honeywell Security Middle East/N. Africa**

Post Office Box 18530  
LOB Building 08, Office 199  
Jebel Ali, Dubai, United Arab Emirates  
[www.honeywell.com/security/me](http://www.honeywell.com/security/me)  
☎ +971.04.881.5506

**Honeywell Security Northern Europe**

Ampèrestraat 41  
1446 TR Purmerend, The Netherlands  
[www.honeywell.com/security/nl](http://www.honeywell.com/security/nl)  
☎ +31.299.410.200

**Honeywell Security Deutschland**

Johannes-Mauthe-Straße 14  
D-72458 Albstadt, Germany  
[www.honeywell.com/security/de](http://www.honeywell.com/security/de)  
☎ +49 74 31 / 8 01-18 70

**Honeywell Security France**

Immeuble Lavoisier  
Parc de Haute Technologie  
3-7 rue Georges Besse  
92160 Antony, France  
[www.honeywell.com/security/fr](http://www.honeywell.com/security/fr)  
☎ +33.(0).1.40.96.20.50

**Honeywell Security Group Italia SpA**

Via della Resistenza 53/59  
20090 Buccinasco  
Milan, Italy  
[www.honeywell.com/security/it](http://www.honeywell.com/security/it)  
☎ +39.02.4888.051

**Honeywell Security Group España**

Avenida de Italia, nº 7, 2a planta  
C.T.C. Coslada  
28821 Coslada, Madrid, Spain  
[www.honeywell.com/security/es](http://www.honeywell.com/security/es)  
☎ +34.902.667.800

# Honeywell

[www.honeywellvideo.com](http://www.honeywellvideo.com)  
**+1.800.323.4576 (North America only)**  
[HSGtechnicalsupport@honeywell.com](mailto:HSGtechnicalsupport@honeywell.com)

Document 800-18864 – 07/2014

© 2014 Honeywell International Inc. All rights reserved. No part of this publication may be reproduced by any means without written permission from Honeywell. The information in this publication is believed to be accurate in all respects. However, Honeywell cannot assume responsibility for any consequences resulting from the use thereof. The information contained herein is subject to change without notice. Revisions or new editions to this publication may be issued to incorporate such changes.